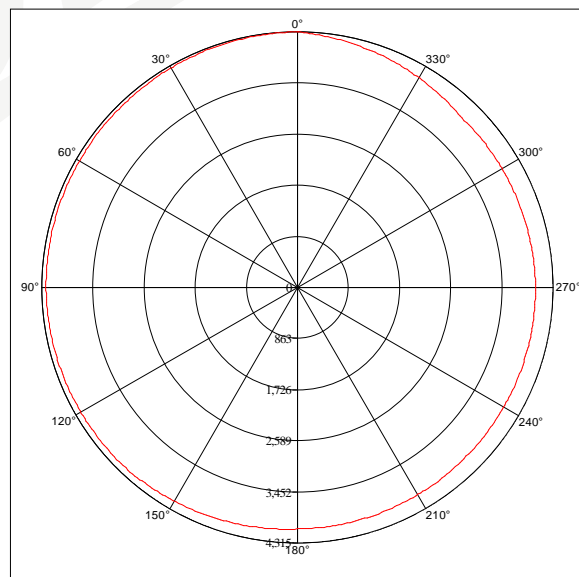
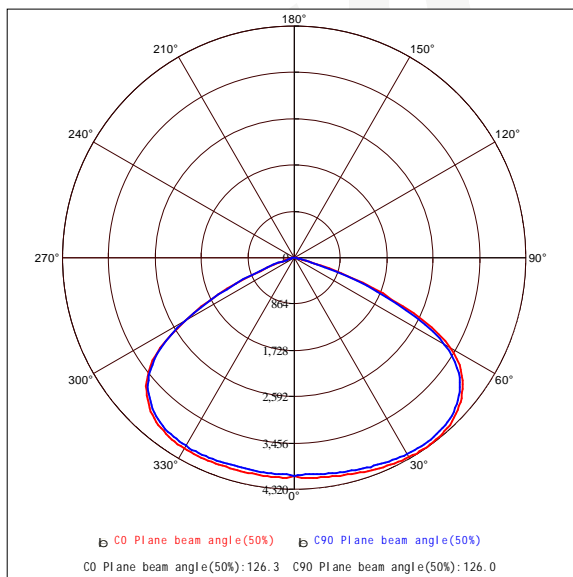


### Goniophotometer Test Report

Measured Para U: 229.1V I: 749.0mA P: 93.70W PF: 0.545 Test LM: 14255.511m						
Lamp Name: LED STREET LIGHT		Lamp Type:		Weight(kg):		
Lamp ID: LPSTL-100W		Lamp Spec: LPSTL-100W		Shape Size:		
Manufactory: LIPER		Sur(m <sup>2</sup> ):		Protect Angle(Deg):		
Light Source Data			Photometric Data			
Model	LPSTL-100W		Peak Value(cd)	4312.8	Efficiency(lm/w)	152.1
Nominal P(w)	1.0		Position	0.0, 34.0	UP(C0-C180)	0.0
Rated Volt(v)	1.0		Total Flux(lm)	14255.510	Down(C0-C180)	54.5
Rated Flux(lm)	1.0		Up Flux Rate(%)	0.0	UP(C180-C360)	0.0
Illuminant QTY	1		Dw Flux Rate(%)	100.0	Down(C180-C360)	45.5

Planar Intensity Distribution Curve

Peak Point Conical surface Curve



Gama Angle Range: -90 - 90(Deg)

Gama interval (Deg): 1

Temperature(Deg): 30

Tester: zxcg

Distance(m): 7.000

Test System: ZWL Goniophotometer System V3.0

C Angle Range: 0 - 180(Deg)

C interval (Deg): 45

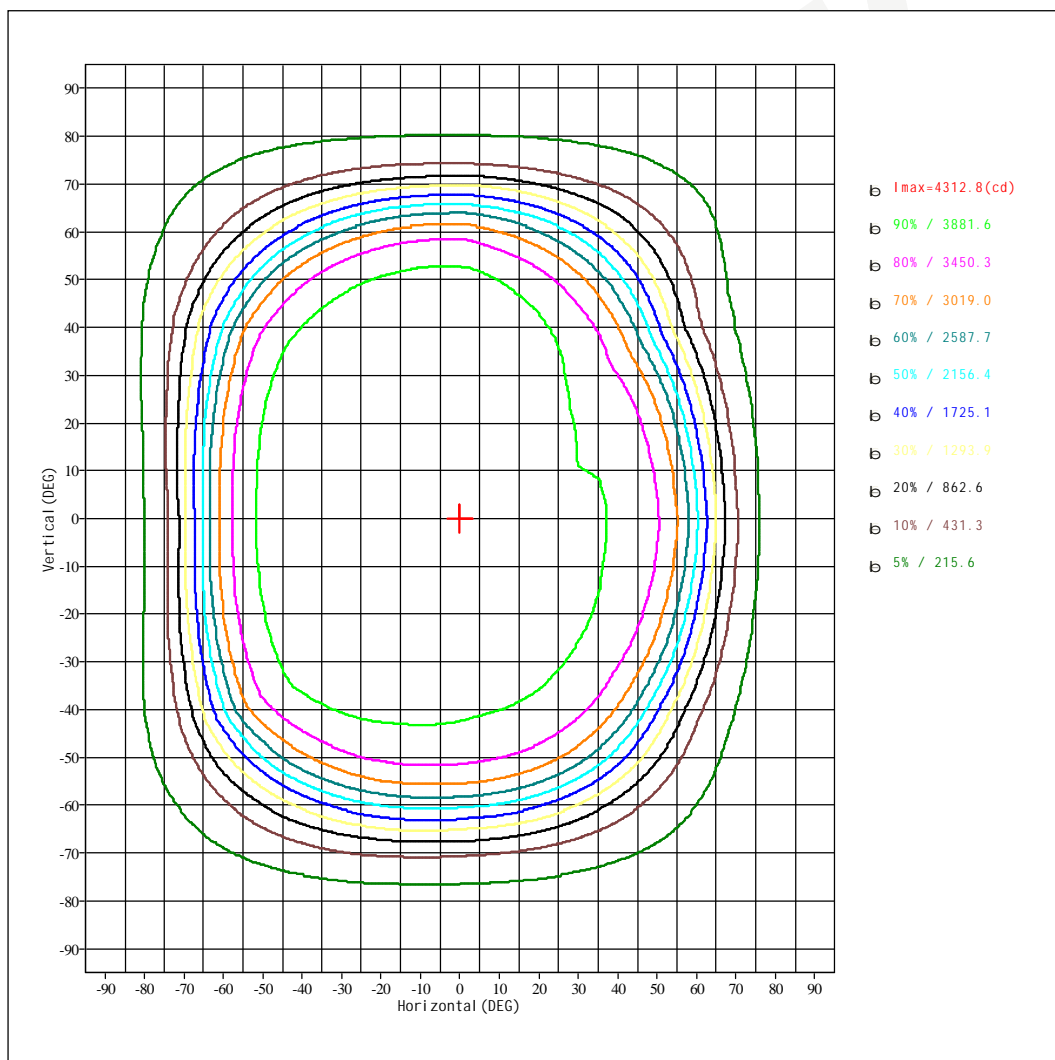
Humi dity(%): 60

Date: 2024-8-26

Remark:

Measured Para U: 229.1V I: 749.0mA P: 93.70W PF: 0.545 Test LM: 14255.511m		
Lamp Name: LED STREET LIGHT	Lamp Type:	Weight(kg):
Lamp ID: LPSTL-100W	Lamp Spec: LPSTL-100W	Shape Si ze:
Manufactory: LIPER	Sur(m^2):	Protect Angle(Deg):

Planar IsoCandela Curve



Gama Angle Range: -90 - 90(Deg)

Gama interval (Deg): 1

Temperature(Deg): 30

Tester: zxcg

Distance(m): 7.000

Test System: ZWL Goniophotometer System V3.0

C Angle Range: 0 - 180(Deg)

C interval (Deg): 45

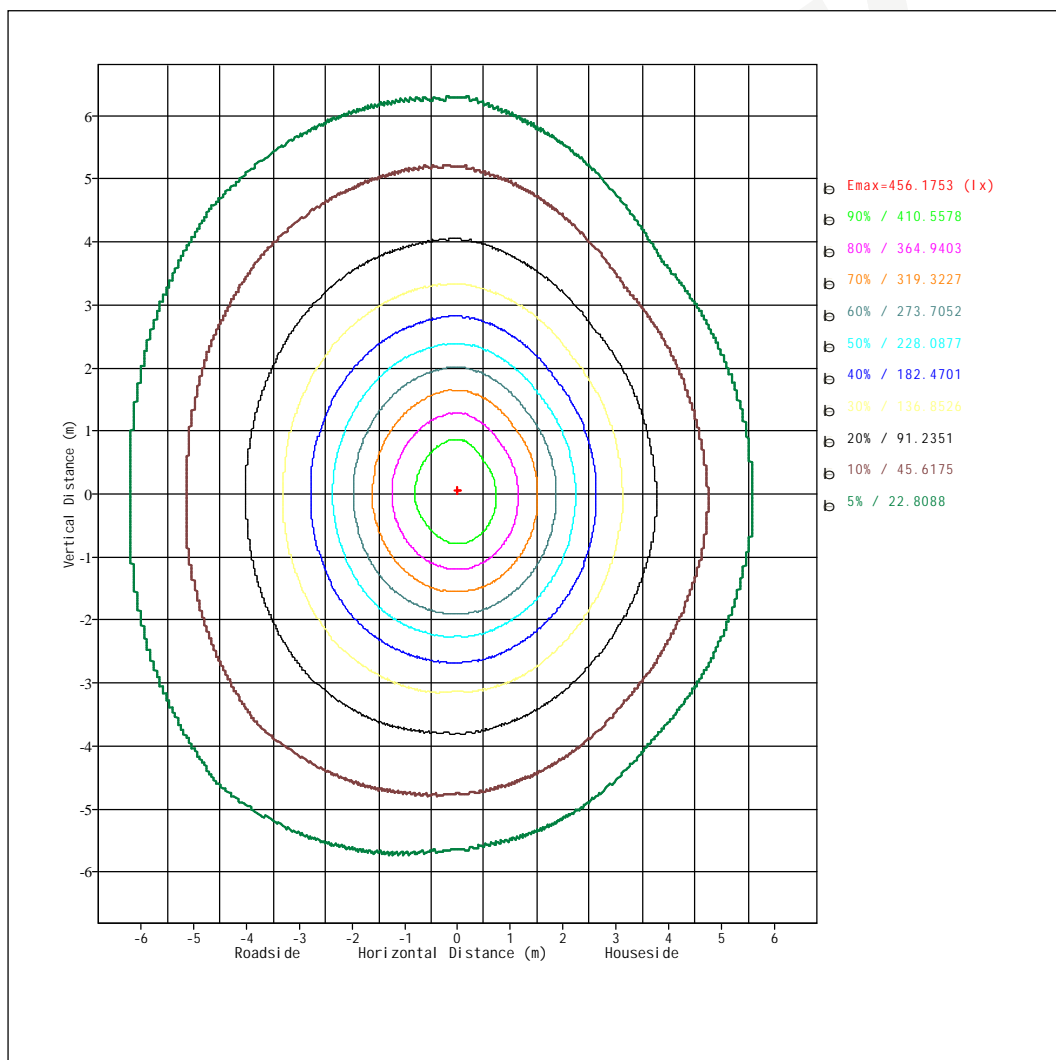
Humi di ty(%): 60

Date: 2024-8-26

Remark:

Measured Para U: 229.1V I: 749.0mA P: 93.70W PF: 0.545 Test LM: 14255.511m		
Lamp Name: LED STREET LIGHT	Lamp Type:	Weight(kg):
Lamp ID: LPSTL-100W	Lamp Spec: LPSTL-100W	Shape Si ze:
Manufactory: LIPER	Sur(m <sup>2</sup> ):	Protect Angle(Deg):

Planar Isolux curve



Gama Angle Range: -90 - 90(Deg)

Gama interval (Deg): 1

Temperature(Deg): 30

Tester: zxcg

Distance(m): 7.000

Test System: ZWL Goniophotometer System V3.0

C Angle Range: 0 - 180(Deg)

C interval (Deg): 45

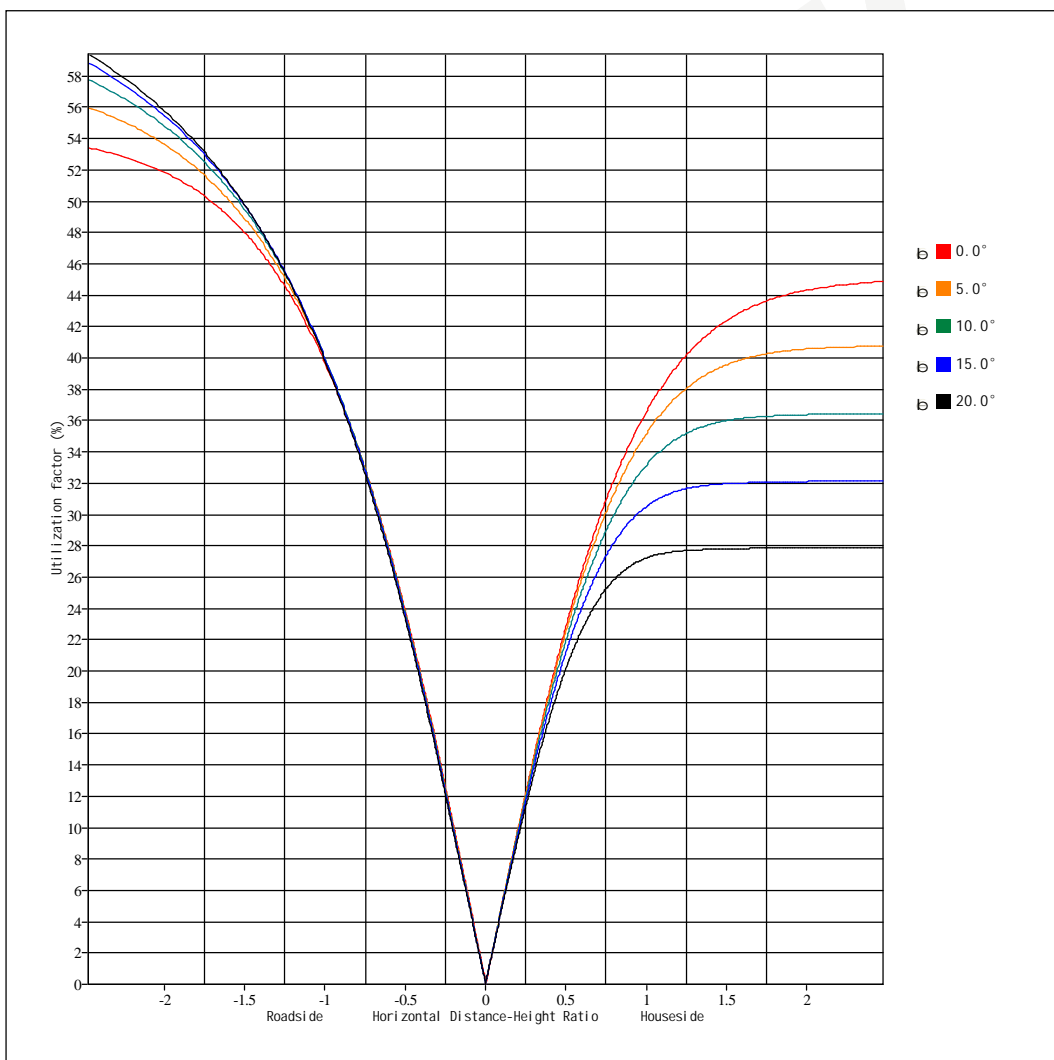
Humi di ty(%): 60

Date: 2024-8-26

Remark:

Measured Para U: 229.1V I: 749.0mA P: 93.70W PF: 0.545 Test LM: 14255.51lm		
Lamp Name: LED STREET LIGHT	Lamp Type:	Weight(kg):
Lamp ID: LPSTL-100W	Lamp Spec: LPSTL-100W	Shape Si ze:
Manufactory: LIPER	Sur(m^2):	Protect Angle(Deg):

Utilization Coefficient



Gama Angle Range: -90 - 90(Deg)

Gama interval (Deg): 1

Temperature(Deg): 30

Tester: zxg

Distance(m): 7.000

Test System: ZWL Goniophotometer System V3.0

C Angle Range: 0 - 180(Deg)

C interval (Deg): 45

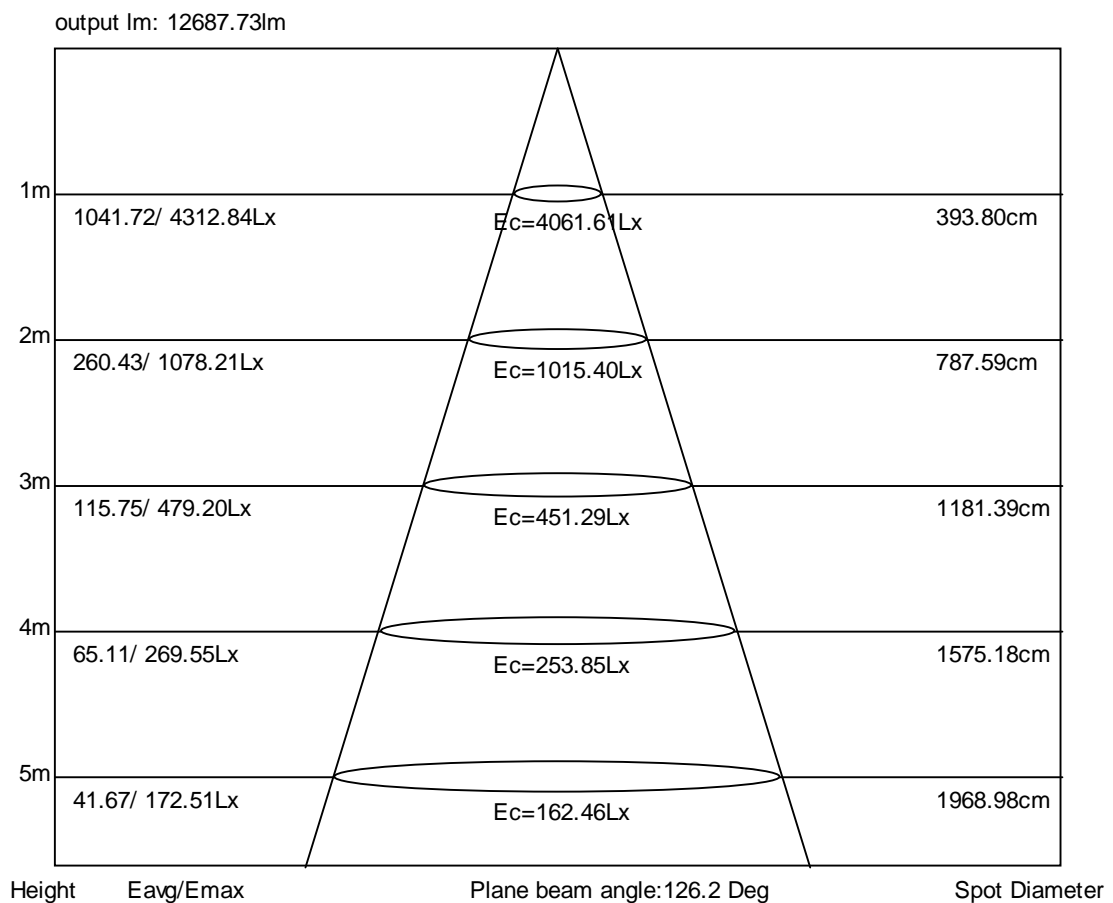
Humi di ty(%): 60

Date: 2024-8-26

Remark:

Measured Para U: 229.1V I: 749.0mA P: 93.70W PF: 0.545 Test LM: 14255.511m		
Lamp Name: LED STREET LIGHT	Lamp Type:	Weight(kg):
Lamp ID: LPSTL-100W	Lamp Spec: LPSTL-100W	Shape Si ze:
Manufactory: LIPER	Sur(m <sup>2</sup> ):	Protect Angle(Deg):

Average Illumination



Gama Angle Range: -90 - 90(Deg)

Gama interval (Deg): 1

Temperature(Deg): 30

Tester: zxg

Distance(m): 7.000

Test System: ZWL Goniophotometer System V3.0

C Angle Range: 0 - 180(Deg)

C interval (Deg): 45

Humi di ty(%): 60

Date: 2024-8-26

Remark:

Measured Para U: 229.1V I: 749.0mA P: 93.70W PF: 0.545 Test LM: 14255.51lm		
Lamp Name: LED STREET LIGHT	Lamp Type:	Weight(kg):
Lamp ID: LPSTL-100W	Lamp Spec: LPSTL-100W	Shape Size:
Manufactory: LIPER	Sur(m <sup>2</sup> ):	Protect Angle(Deg):

Ring-shaped Flux Data Table

Gm\C(Deg)	0	45	90	135	180	225	270	315	Range	Ring	T(lm)
5	4121	4076	4058	4028	4103	4070	4042	4021	0-5	97.1	97.1
10	4144	4098	4082	4046	4100	4067	4039	4018	5-10	291	388
15	4177	4122	4114	4074	4098	4071	4039	4022	10-15	484	873
20	4218	4159	4155	4109	4104	4079	4044	4030	15-20	676	1548
25	4260	4197	4193	4148	4111	4088	4051	4039	20-25	865	2414
30	4297	4237	4229	4188	4106	4069	4047	4020	25-30	1049	3463
35	4311	4263	4243	4212	4069	4020	4011	3970	30-35	1221	4684
40	4289	4255	4221	4202	3986	3910	3931	3862	35-40	1372	6056
45	4212	4209	4148	4155	3827	3716	3779	3671	40-45	1492	7548
50	4047	4092	3990	4034	3557	3377	3517	3340	45-50	1561	9109
55	3786	3882	3706	3815	3079	2780	3057	2756	50-55	1551	10660
60	3288	3493	3180	3418	2247	1836	2252	1826	55-60	1409	12069
65	2375	2765	2195	2641	1271	903	1285	907	60-65	1096	13165
70	1252	1718	1145	1589	451	262	466	262	65-70	667	13832
75	321	740	277	549	106	76.4	108	76.3	70-75	291	14123
80	88.3	153	81.6	118	53.4	41.1	53.9	40.9	75-80	83.5	14206
85	49.6	67.1	45	60.9	27.2	25.5	27.3	25.2	80-85	30.5	14237
90	29.2	33.3	32.2	32.6	26.2	26.1	26	25.9	85-90	18.6	14255
95									90-95		
100									95-100		
105									100-105		
110									105-110		
115									110-115		
120									115-120		
125									120-125		
130									125-130		
135									130-135		
140									135-140		
145									140-145		
150									145-150		
155									150-155		
160									155-160		
165									160-165		
170									165-170		
175									170-175		
180									175-180		

Gama Angle Range: -90 - 90(Deg)

Gama interval (Deg): 1

Temperature(Deg): 30

Tester: zxcg

Distance(m): 7.000

Test System: ZWL Goniophotometer System V3.0

C Angle Range: 0 - 180(Deg)

C interval (Deg): 45

Humidity(%): 60

Date: 2024-8-26

Remark:

Measured Para U: 229.1V I: 749.0mA P: 93.70W PF: 0.545 Test LM: 14255.511m		
Lamp Name: LED STREET LIGHT	Lamp Type:	Weight (kg):
Lamp ID: LPSTL-100W	Lamp Spec: LPSTL-100W	Shape Si ze:
Manufactory: LIPER	Sur(m^2):	Protect Angle(Deg):

CD Table

Gm\C(Deg)	0	20	40	60	80	100	120	140	160	180	200	220	240	260	280	300	320	340
5.0	4121	4101	4081	4070	4062	4051	4038	4036	4070	4103	4088	4074	4061	4048	4037	4028	4032	4077
10.0	4144	4123	4103	4093	4086	4074	4058	4052	4077	4100	4086	4071	4058	4046	4035	4025	4032	4089
15.0	4177	4153	4128	4119	4116	4105	4087	4076	4087	4098	4086	4074	4060	4046	4035	4027	4039	4109
20.0	4218	4192	4165	4157	4156	4145	4124	4109	4106	4104	4093	4082	4068	4051	4041	4034	4050	4135
25.0	4260	4232	4203	4195	4194	4183	4163	4144	4127	4111	4101	4091	4076	4059	4048	4043	4063	4163
30.0	4297	4271	4243	4234	4231	4220	4201	4179	4141	4106	4090	4073	4062	4052	4041	4029	4050	4176
35.0	4311	4290	4268	4257	4247	4236	4222	4196	4131	4069	4047	4026	4017	4013	4002	3984	4007	4162
40.0	4289	4274	4258	4244	4228	4217	4208	4179	4081	3986	3953	3918	3916	3926	3916	3885	3909	4102
45.0	4212	4211	4209	4189	4161	4150	4153	4119	3970	3827	3778	3728	3737	3765	3755	3707	3731	3976
50.0	4047	4067	4088	4059	4012	3999	4020	3982	3766	3557	3478	3397	3423	3486	3478	3398	3417	3738
55.0	3786	3828	3871	3824	3744	3729	3779	3734	3401	3079	2948	2813	2871	2997	2991	2855	2869	3336
60.0	3288	3378	3470	3390	3248	3232	3340	3290	2759	2247	2067	1881	1972	2161	2159	1966	1986	2649
65.0	2375	2546	2723	2578	2320	2293	2495	2491	1870	1271	1110	944	1029	1202	1203	1031	1068	1733
70.0	1252	1456	1667	1530	1271	1242	1443	1464	949	451	368	282	328	421	421	329	370	819
75.0	321	505	695	588	378	336	460	501	300	106	93	79.7	87	101	101	86.9	103	214
80.0	88.3	117	146	130	97.3	89.6	106	111	81.7	53.4	48	42.4	45.3	51.1	51	45.2	46.1	67.6
85.0	49.6	57.3	65.2	59.8	49.8	48.5	55.7	57.2	41.9	27.2	26.4	25.7	26.1	26.9	26.9	25.9	27.9	38.9
90.0	29.2	31	32.8	32.9	32.4	32.3	32.5	31.9	29	26.2	26.2	26.1	26.1	26	26	26	26.3	27.8
95.0																		
100.0																		
105.0																		
110.0																		
115.0																		
120.0																		
125.0																		
130.0																		
135.0																		
140.0																		
145.0																		
150.0																		
155.0																		
160.0																		
165.0																		
170.0																		
175.0																		
180.0																		

Gama Angle Range: -90 - 90(Deg)

C Angle Range: 0 - 180(Deg)

Gama interval (Deg): 1

C interval (Deg): 45

Temperature(Deg): 30

Humi di ty(%): 60

Tester: zxcg

Date: 2024-8-26

Distance(m): 7.000

Remark:

Test System: ZWL Goniophotometer System V3.0